



## BEFORE YOU BEGIN

### Tools You'll Need

- a good saw
- a carpenter's rule (English/metric)
- a good hammer
- a pull bar
- a tapping block

### Pergo System Components

- Pergo underlayment (one roll covers 100 sq. ft.).
- Pergo installation spacers. (Remember that Pergo must be installed as a floating floor, with a ¼ inch expansion space around the perimeter. Pergo must never be adhered to the subfloor.)
- Pergo transitions and moldings to complete the job.

### Room Preparation

- Allow planks to lay flat in unopened cartons at room temperature for a minimum of 48 hours prior to installation (72-96 hours in very dry or very humid areas).
- Pergo may be installed on all types of subfloors and over most existing flooring surfaces. Always remove carpeting. Wood flooring that is installed over concrete must be removed before installation.
- Remove any existing quarter round to allow for the ¼ inch expansion space needed for the floating floor. Existing quarter round may be reused or replaced with color-coordinated Pergo quarter round.

## SUBFLOOR PREPARATION

Subfloor must be clean, dry and flat. To test for flatness, move a straight edge, 6 feet or longer, across the surface of the floor. Any low spots greater than 3/16 of an inch must be filled in with a portland cement based leveling compound. Any ridges on the floor must be removed.

On concrete subfloors, you **must** use a 6-mil. (0.15mm) polyethylene film as a vapor barrier. We recommend using Pergo Moisturbloc™ Film or SoftSeal™ combination underlayment since they are specially formulated for long life over concrete floors. The edges must overlap by at least 8 inches (200mm). Polyethylene film is needed over all subfloors that contain concrete even if the concrete is covered by vinyl, linoleum tile or sheet flooring to ensure a proper vapor barrier.

Pergo floors require an underlayment to provide added comfort and noise reduction. Pergo SilentStep™ or Soundbloc™ Underlayment Foam are recommended. One roll of Pergo underlayment covers approximately 100 sq. ft.

## BASEMENTS, DAMP AREAS AND SPECIAL SITUATIONS

If installing in a basement or damp area, a moisture test is recommended. Never install Pergo over a subfloor with a drain or a sump pump. When installing Pergo in special situation areas such as: terrazzo, pier and beam, radiant heating and to also learn how to properly acclimate your floor, please contact our consumer help line at 1-800-33-PERGO (1-800-337-3746) or log on to [www.pergo.com](http://www.pergo.com) to obtain important additional information.

## BATHROOM INSTALLATIONS

The entire perimeter expansion space and all other expansion spaces in the bathroom, including those around the toilet drain collar, must be filled with Pergo Sealant or 100% mildew-resistant silicone sealant.

## KITCHEN AND OTHER INSTALLATIONS

It is very important to prevent water or moisture from getting under the floor. Specific expansion spaces in the kitchen and other areas, where there is a potential for moisture or water leaks, must be filled with Pergo Sealant or 100% mildew-resistant silicone sealant (i.e., in front of sinks, dishwashers, refrigerators, around the icemaker line, exterior doorways, sliding glass doors, laundry rooms, etc.).

For more detailed information, you can purchase the installation video, [Instructions for Pergo Glue-free Laminate Floor](#), item #81876 through your retailer.

## RADIANT HEAT

Pergo is an excellent choice for most radiant floor heating systems. The surface temperature of the installed floor should not exceed 84° F during normal operation. If you are in doubt, ask your retailer or call the Pergo consumer help line at 1-800-33-PERGO (1-800-337-3746).

## PROPER CARE AND REPAIRS

Before moving furniture back in the room, place felt floor protectors under the legs of chairs, sofas, TV stands, tables and other easily movable furniture. Replace plastic casters with rubber casters. Place walk-off mats at the entrances of your home to collect dirt.

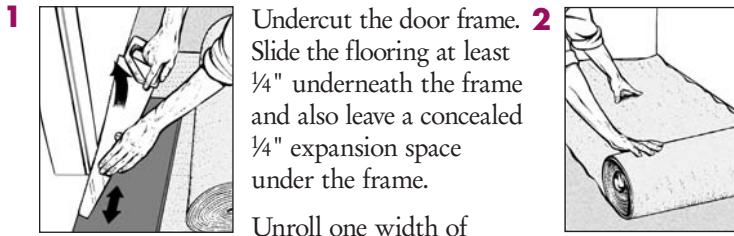
Minor damage to the floor, such as a small chip or dent, can easily be repaired using Pergo Finishing Putty. The putty is easy to use and color-coordinated to each Pergo flooring design.

## METHOD OF INSTALLATION

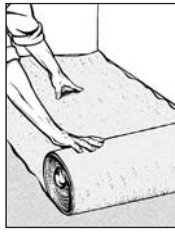
Decide the best direction to install the planks based on the shape of the room, the longest and straightest starting wall, the location of the incoming light, and the focal point of the room.

For halls, the installation will generally look best if the planks are installed parallel to the longest wall.

# INSTALLATION FOR PERGO® SELECT



**1** Undercut the door frame. Slide the flooring at least ¼" underneath the frame and also leave a concealed ¼" expansion space under the frame.



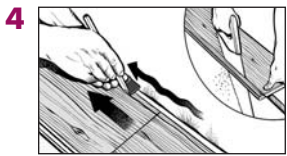
**2** Unroll one width of underlay foam as needed.



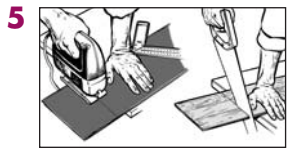
**3 a** Remove the tongue on the end of the first plank and the tongue along the length of all planks against the starting wall.



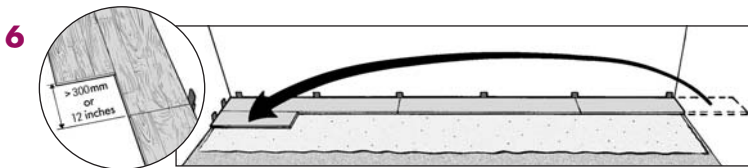
**3 b** Assemble the first row. Use two spacers thick end to thin end to maintain a ¼" expansion space between the plank edges and the walls or other fixed surfaces.



**4** If the starting wall is uneven, scribe the contour of the wall on the planks and cut along the pencil line.



**5** Use a saber saw or circular saw using a blade with carbide teeth. Blades with 48 teeth or greater provide smoother cuts and last longer.

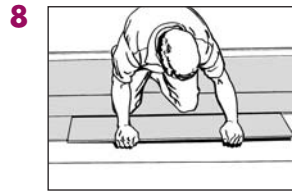


**6** Use the pieces cut from the ends of the rows to begin another row. Maintain a minimum of 12 inches between end joints from one row to the next.

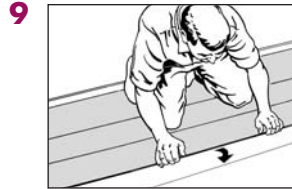
**Installation Tip:** Place a weight or carton of planks on the row that you are installing when using this method. It will keep the installed planks in place.



**7** Place the tongue of the end joint into the groove of the installed plank and rotate downward until the joint is locked.



**8** There will be a gap on the long side of the plank. Lift the long side up slightly and press the plank until the laminate edges meet.



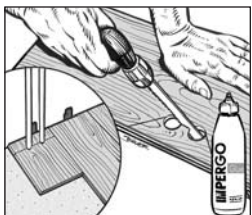
**9** Rotate downward until the joint locks. The joint should fit tightly without any gaps.



**10** At the end of the row use the Pergo Pull Bar to tap the end joint into position. When a plank cannot be raised use the Pergo Tapping Block to tap the joints into position.

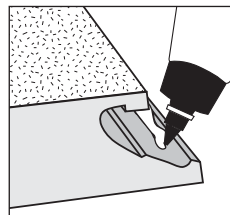


**11** **Cutting the last row:** Place a full row of planks on top of the last installed row. Use the full width of a scrap piece of plank. Place the tongue side against the wall and the pencil against the extended groove and mark a line the length of the wall. Cut along the pencil line.



## INSTALLING PERGO AROUND PIPES

- Leave a ¼" expansion space around the pipes.
- Use glue to join cut pieces.



## GLUING OPTION

When there is heavy furniture or when used commercially, Pergo Select can be glued. If choosing to glue the floor, the entire floor must be glued. Place a continuous ⅛" bead of glue in the lower portion of each groove, and then assemble as shown for the glueless installation instructions. Wipe up any glue residue with a damp cloth immediately.

**Note:** The installer can walk on the floor as needed to finish the installation. Following installation, allow the floor to set overnight for 12 hours before resuming normal usage of the room.