

BASIC INSTALLATION REQUIREMENTS



BEFORE YOU BEGIN

1. Allow planks or tiles to lay flat in unopened cartons at room temperature for a minimum of 48 hours prior to installation (72-96 hours in very dry or very humid areas).
2. Inspect each plank or tile for damage prior to installation.
3. Make sure that you have everything you will need:
 - A good saw, a hammer, and a carpenter's rule (English/metric).
 - Pergo Installation Spacers (to create the proper 1/4 inch expansion space between the plank edges and the walls or other fixed surfaces), a tapping block, and a pull bar.
 - Pergo Installation Straps are recommended for glued products to ensure good results and uniformly tight joints, while increasing the speed of installation.
 - A bucket with clean lukewarm water, and several absorbent cloths (when using glue).
 - Pergo Accessories to complete the job (i.e. transition moldings, wallbase and quarter round).

4. Remove any existing quarter round to allow for the 1/4 inch expansion space needed for the floating floor. Existing quarter round may be reused or replaced with color-coordinated Pergo quarter round.
5. Pergo may be installed on all types of subfloors and directly over most existing flooring surfaces. Always remove carpeting and padding. Wood flooring that is installed over concrete must be removed before installation.

NOTE: If installing in a basement or damp area, a moisture test is recommended. Never install Pergo over a subfloor with a drain or a sump pump. When installing Pergo in special situation areas such as: terrazzo, pier and beam, radiant heating and to also learn how to properly acclimate your floor, please contact our consumer help line at 1-800-33-PERGO (1-800-337-3746) or log on to www.pergo.com to obtain important additional information.

KITCHEN & BATH INSTALLATION

Pergo is resistant to water, and may be installed in bathrooms and kitchens. However, it is very important to prevent water or moisture from getting under the floor.

- **Bathroom Installation:** The entire perimeter expansion space and all other expansion spaces in the laundry room and bathroom, including those around the toilet drain collar, must be filled with Pergo Sealant or 100% mildew-resistant silicone sealant.
- **Kitchen and Other Installations:** Specific expansion spaces in the kitchen and other areas where there is a potential for moisture or water leaks, must be filled with Pergo Sealant or 100% mildew-resistant silicone sealant (i.e. in front of sinks, dishwashers, refrigerators, exterior doorways, sliding glass doors and around the icemaker line).

SUBFLOOR PREPARATION

1. Your subfloor must be clean, dry and flat. To test for flatness, move a straight edge, 6 feet or longer, across the surface of the floor. Any low spots greater than 3/16 of an inch must be filled in with a portland cement based leveling compound. Any ridges on the floor must be removed.

2. On concrete subfloors, you must use a 6-mil. (0.15mm) polyethylene film as a vapor barrier. We recommend using Pergo Moisturbloc™ Film or Pergo SoftSeal™ combination underlayment, as they are specially formulated for long life over concrete floors. The edges must overlap by at least 8 inches (200mm). Polyethylene film is needed over all subfloors that contain concrete even if the concrete is covered by vinyl, linoleum tile or sheet flooring to ensure a proper vapor barrier. Pergo flooring should never be installed on concrete that is less than 60 days old.
3. Pergo floors require an underlayment to provide added comfort and noise reduction. Pergo SilentStep™ or Pergo Soundbloc™ Underlayment Foam are recommended, as they are designed to absorb sound and make the floor more comfortable to walk on. One roll of Pergo SilentStep™ or Pergo Soundbloc™ covers approximately 100 sq. ft.

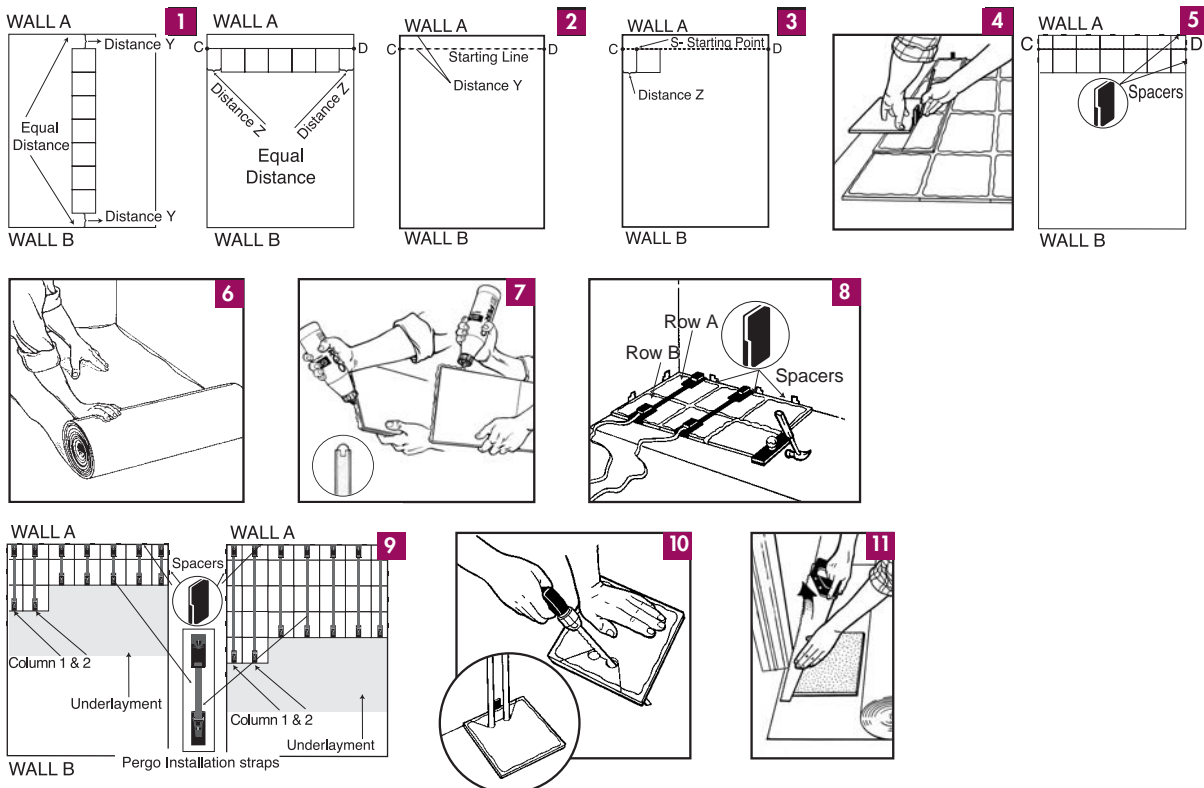
PERGO SELECT TILES INSTALLATION

Note: When installing Pergo in special situation areas such as terrazzo, pier and beam, radiant heating and to also learn how to properly acclimate your floor, please contact our consumer help line at 1-800-33-PERGO (1-800-337-3746) or log on to www.pergo.com to obtain important information.

Fig. 1 Measure the length and width of the room and determine distances Y and Z. **Fig. 2** Measure distance Y out from the two corners of Wall A to points C and D and strike a chalk line on the subfloor parallel to Wall A. **Fig. 3** Measure distance Z from point C and mark on line CD. This is your starting point S. Place a tile on line CD at point S with one groove side to your left and the other groove against line CD. **Fig. 4** Marking technique for tiles that need to be cut: Place a second tile directly on top of the first tile as seen in Fig.#3 edge to edge, groove to groove. Place a third tile on top of these tiles and slide it to Wall A. Use the thick end of a spacer and a pencil to mark a line on the second tile. **Fig. 5** Using a carbide tip saw blade, cut the tile that you have marked, fit the tile into place without glue. Complete dry fitting the first two rows. **Fig. 6** Remove the dry fit tile keeping the cut pieces in order. Unroll one width of underlayment next to Wall A. The chalk line will be covered. It is no longer needed. **Fig. 7** Place a generous and continuous bead of glue in the groove of the tile. **Fig. 8** Working left to right, glue and join together with installation straps, the first piece of row A with the first piece of row B. Continue in the same sequence across the width of the room. Using the tapping block, gently align the tiles keeping all four corners together. Glue should ooze to the surface to seal the joints. Wipe off excess glue with a damp cloth immediately. After installing the first two rows wait one hour before installing the remainder of the floor. **Fig. 9** Proceed across the width of the floor and repeat until the entire floor is installed.

Fig. 10 Pipes: To allow for expansion, measure and drill holes centered on and 1/2 inch larger than the diameter of the pipe. **Fig. 11** Door Frames: To fit flooring under a door frame, lay a loose tile upside down on top of the underlayment. Saw the bottom of the door frame so that the tile can slide underneath. Remember to have at least 1/4 inch of tile beneath the door frame and at least a 1/4 inch expansion space between the tile and the wall behind the door frame. For more detailed instructions, please obtain an Installation Instruction Sheet or Pergo Installation Video from your retailer. For U.S. and Canadian residents, contact our consumer help line at **1-800-33-PERGO (1-800-337-3746)**. **Note:** The installer can walk on the floor as needed to finish the installation. Following installation, allow the floor to set overnight for 12 hours before resuming normal usage of the room.

Special Notes: If installing in a basement or another damp area, a moisture test is recommended. Never install Pergo over a subfloor with a drain or sump pump. The entire perimeter expansion space and all other expansion spaces in the laundry rooms and bathrooms, including those around the toilet drain collar, must be filled with Pergo Sealant or 100% mildew-resistant silicone sealant. Specific expansion spaces in the kitchen and other areas, where there is a potential for moisture or water leaks, must also be filled with sealant (i.e., in front of sinks, dishwashers, refrigerators, exterior doorways, sliding glass doors, and around the ice-maker line.). During the first 6 to 8 weeks, you may notice swelling along the joints of your floor. THIS IS NORMAL—in fact, it is a good sign that an adequate amount of Pergo Glue has been used. It is caused by the absorption of the glue by the core material and will disappear as the glue fully cures.



Installation Calculator for Pergo Select Tiles

Room Size in Square Feet	100	125	150	175	200	225	250
Pergo Select Tiles							
Cartons of tiles (includes % for waste)	11	13	16	19	21	24	26
Rolls of underlayment	1	2	2	2	2	3	3
Bottles of glue	2	2	3	3	4	4	5

See package installation guide or visit www.pergo.com for additional square footage information.