

## BEFORE YOU BEGIN

### Tools You'll Need

- Pergo Glue Activator
- a good saw
- a good hammer
- a tapping block
- a carpenter's rule (English/metric)
- a pull bar
- spacers

### Inspect

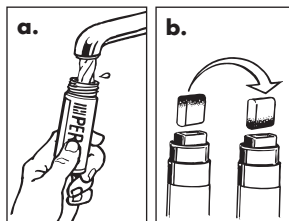
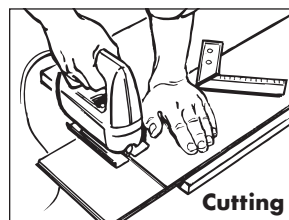
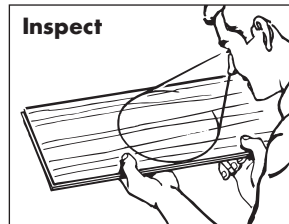
Inspect planks carefully for any damage. Once a plank has been installed then disassembled, it should not be installed again.

### Cutting

You will need to use a saber saw or circular saw using a blade with carbide teeth. Blades with 48 teeth or greater provide smoother cuts and last longer.

### Glue Activator

a. Fill the activator with water.  
b. After installing 250 sq. ft. of planks, remove and reverse the ends of the felt tip. One felt tip, using both ends as shown, will activate glue for up to 500 sq. ft. of planks.



### Pergo System Components

- Pergo underlayment (one roll covers 100 sq. ft.)
- Pergo installation spacers. (Remember that Pergo must be installed as a floating floor, with a 1/4 inch expansion space around the perimeter and around any fixed object. Pergo must never be adhered to the subfloor.)
- Pergo transitions and moldings to complete the job.

### Room Preparation

- Allow planks to lay flat in unopened cartons at room temperature for a minimum of 48 hours prior to installation (72-96 hours in very dry or very humid areas).
- Pergo may be installed on all types of subfloors and over most existing flooring surfaces. Always remove carpeting and padding. Wood flooring that is installed over concrete must be removed before installation.
- Remove any existing quarter round to allow for the 1/4 inch expansion space needed for the floating floor. Existing quarter round may be reused or replaced with color-coordinated Pergo quarter round.

**Note:** If installing in a basement or damp area, a moisture test is recommended. Never install Pergo over a subfloor with a drain or a sump pump. When installing Pergo in special situation areas such as: terrazzo, pier and beam, radiant heating and to also learn how to properly acclimate your floor, please contact our consumer help line at 1-800-33-PERGO (1-800-337-3746) or log on to [www.pergo.com](http://www.pergo.com) to obtain important additional information.

## SUBFLOOR PREPARATION

- Subfloor must be clean, dry and flat. To test for flatness, move a straight edge, 6 feet or longer, across the surface of the floor. Any low spots greater than 3/16 of an inch must be filled in with a portland cement based leveling compound. Any ridges on the floor must be removed.
- On concrete subfloors, you must use a 6-mil. (0.15mm) polyethylene film as a vapor barrier. We recommend using Pergo Moisturbloc™ Film or SoftSeal™ combination underlayment since they are specially formulated for long life over concrete floors. An 8 inch (200mm) overlap must be created to join sheets of film when covering the subfloor. **Please note: Pergo should never be installed on concrete slabs less than 60 days old. Refer to the Pergo Product Manual for more information on concrete requirements.** Polyethylene film is needed over all subfloors that contain concrete even if the concrete is covered by vinyl, linoleum tile or sheet flooring to ensure a proper vapor barrier.
- Pergo floors require an underlayment to provide added comfort and noise reduction. Pergo SilentStep™ or Soundbloc™ Underlayment Foam are recommended. One roll of Pergo underlayment covers approximately 100 sq. ft.
- **Kitchen, Bathrooms and Other Installations**  
Specific expansion spaces in the kitchen and other areas, where there is a potential for moisture or water leaks, must be filled with Pergo

Sealant or 100% mildew-resistant silicone sealant (i.e., in front of sinks, dishwashers, exterior doorways, sliding glass doors and in refrigerator spaces and around the icemaker line.) For laundry rooms and full bathrooms only, fill all expansion spaces with 100% silicone.

### • Radiant Heat

Pergo is an excellent choice for most radiant floor heating systems. The surface temperature of the installed floor should not exceed 84° F during normal operation. If you are in doubt, ask your retailer or call the Pergo consumer help line at 1-800-33-PERGO (1-800-337-3746).

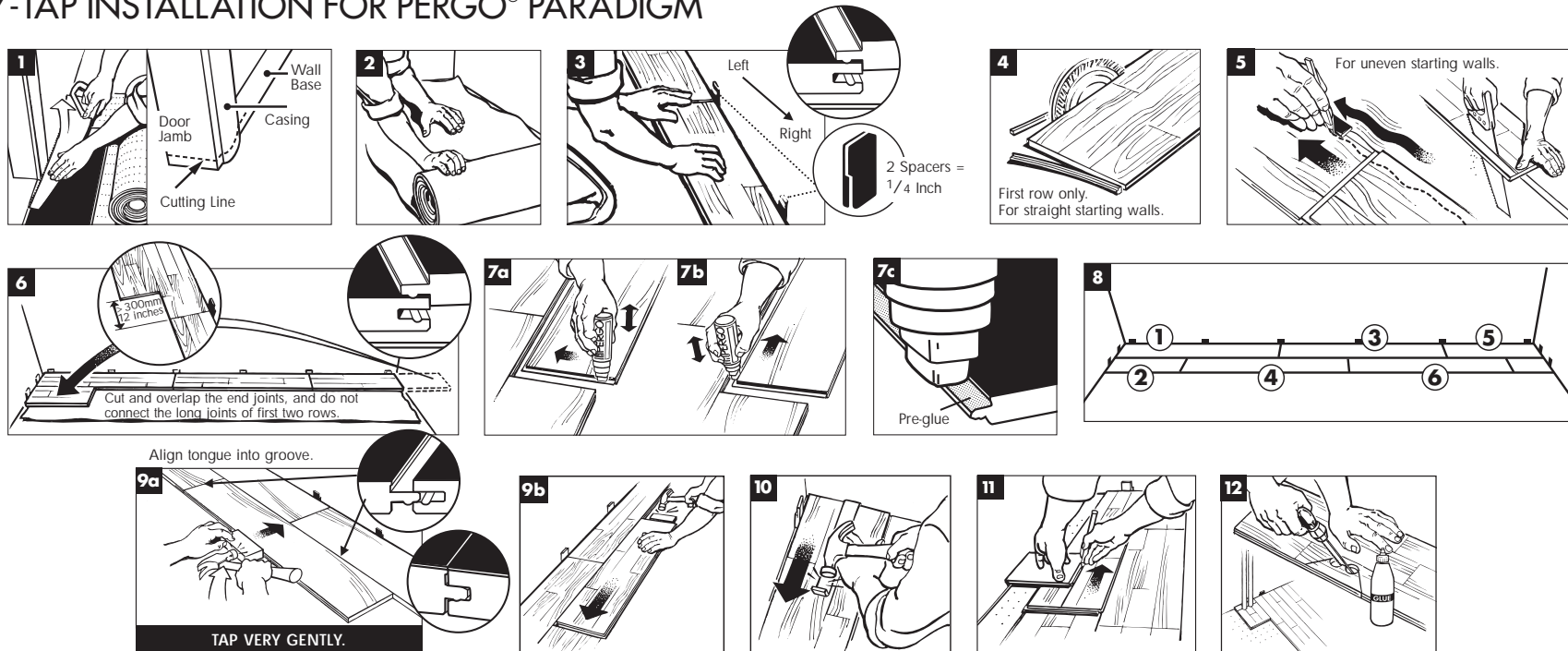
## PROPER CARE AND REPAIRS

- Before moving furniture back in the room, place felt floor protectors under the legs of chairs, sofas, TV stands, tables and other easily movable furniture. Replace plastic casters with rubber casters. Place walk-off mats at the entrances of your home to collect dirt.
- Minor damage to the floor, such as a small chip or dent, can easily be repaired using Pergo Finishing Putty. The putty is easy to use and color-coordinated to each Pergo flooring design.

## METHOD OF INSTALLATION

- Decide the best direction to install the planks based on the shape of the room, the longest and straightest starting wall, the location of the incoming light, and the focal point of the room.
- For halls, the installation will generally look best if the planks are installed parallel to the longest wall.

# EASY-TAP INSTALLATION FOR PERGO® PARADIGM



- 1** Place underlayment and plank on floor. Set the saw on top of the plank and undercut the door frame and one inch of the wallbase. Slide the flooring at least ¼" underneath the frame and also leave a concealed ¼" expansion space under the frame.
- 2** Unroll one width of underlay foam as needed.
- 3** Loose lay the first row of planks by placing the tongue of each end-joint on top of the surface of the adjoining plank.
- 4** Remove the tongue on the end of the first plank and the tongue along the length for all planks against the starting wall.
- 5** If the starting wall is uneven, scribe the contour of the wall on the planks and cut along the pencil line.
- 6** Loose lay the first two rows. Use the piece cut off at the end of each row to begin the next row. Always stagger the end joints from one row to the next by a minimum of 12 inches.
- 7a** When first priming the felt tip, place on top of the end joint tongue and push up and down until water is released from the felt tip. Then push downward and maintain downward pressure while moving it on the top of the tongue.

- 7b** Place the activator on top of the tongue on the long side. Press down and hold to recharge the water supply to the tip and move it along the length of the tongue. **You will see a change in the color of the glue, indicating that sufficient water has been applied to activate the glue.** Fill the activator with water as needed. Inspect all planks prior to installation. If the plank tongue does not turn yellow when water-activated, do NOT install the plank. *Install all planks closing the joint tightly without gaps.*
- 7c** Moisten only pre-glued side of tongue.
- 8** Install the first two rows in this numerical order. Assemble the first two rows then assemble one row at a time, one plank at a time.
- 9a** Taking one plank at a time, activate the glue on the end joint and on the long joint. Install immediately. **Align the tongue into the grooves of the long and short side. Install the long side first by placing the tapping block at the middle of the plank and tap until the joint is closed tightly.** Then, tap in the short side. You have 5–7

minutes to remove a plank that has just been installed—should it be damaged. Activate the glue on a new plank and install.

- 9b** Tap the end joint until it is closed tightly.
- 10** At the end of the row use the Pergo Pull Bar to tap the end joint into position.
- 11** Cutting the last row: Place a full row of planks on top of the last installed row. Loose lay, as done for the first row, by placing the tongue of each end joint on top of the surface of the adjoining plank. Use the full width of a scrap piece of plank. Place the tongue side against the wall and the pencil against the groove and mark a line the length of the wall. Cut along the pencil line.
- 12** Installing Pergo around pipes: Leave a ¼" expansion space around the pipes. Use Pergo glue to join cut pieces. **Note:** The installer can walk on the floor as needed to finish the installation. Following installation, allow the floor to set overnight for 12 hours before resuming normal usage of the room.